

## **THERMOVISION SCANNING SERVICES FOR TRANSMISSION LINES, SUBSTATIONS, TRANSFORMERS**

Ensure uptime at all levels, Early detection of Hots Spots,  
Improvement of Energy Efficiency and Establishment of Green Environment



# **SACHU TECHNOLOGIES**

MIG-519, RK Nilayam Phase-III, KPHB Colony, Kukatpally, Hyderabad, India-500085

Cell: +919493013535, +919493013636. Email: [info@sachu.in](mailto:info@sachu.in)

Website: [www.sachu.in](http://www.sachu.in)

**Branches:** BANGALORE, CHENNAI, PUNE, VISAKHAPATNAM, VIJAYAWADA, MUMBAI, DELHI

The delivery of steadfast Electrical power and other utility services is necessary in our demanding technological world. Manufacturers operating 24/7 depend on it to remain profitable as do commercial enterprises at all levels. A bad connection results in increased resistance and the current flow generates excessive temperature that can easily be detected with Infrared Thermography. If not attended to this connection might break, resulting in loss of power.

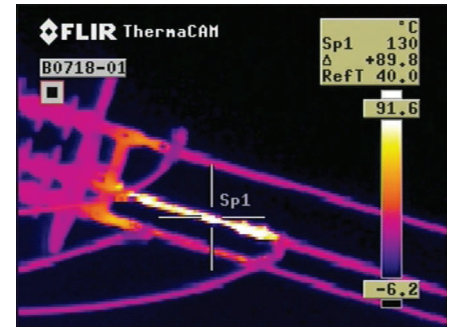
Transmission lines healthiness is possible to distribute the power to the various types of customers through substations, at lowest possible line losses by detecting hotspots using Thermographic scanning . The most successful utility companies take every precaution to prevent sudden outages with help of Thermovision scanning offering by Sachu Technologies.

Some of the most common connections that occur on these lines are dead-end sleeves and splice sleeve connectors. These are compression fitted connections that join conductor ends to each other and to dead-end bell structures.

The end-end sleeves occur at high tower structures and serve to join large spans of conductor lines to each other via a jumper wire. The splice sleeve connectors serve to join conductor ends to each other. These are commonly used to mend damaged or severed lines.

Thermovision Cameras with high resolution 320x240 Pixels is are widely used by Sachu Technologies to look for hot connections

Thermal Imaging Camera using Telephoto lens able to capture from farther away. it's ideal for scanning small or distant targets such as overhead power lines and substation equipment used by Sachu Technologies



### Advantages of Thermovision Scanning for Overhead Transmission Line Towers

Sachu Technologies request all concern engineers and authorities of the Power Generation, Transmission and Distribution system to give us opportunity to extend our hands for providing our sincere Thermography Inspection and Analysis services of the electrical system including Substations and Transmission Lines 11KV/33KV/33KV/66KV/110KV/220KV/400KV/765KV

ThermovisionScanning offering by Sachu Technologies will diminish the breakdowns by giving warning bell and pin pointing the Hotspots enabling us to concentrate on predictive maintenance. Since the exact defective locations are pointed out, outage period is minimized in concentrating the maintenance activity on the particular defective locations

